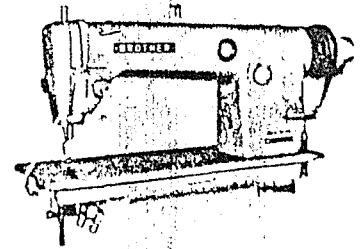


DB2-B755-100



Please clarify Ref. No. and
Parts No. as well as parts name
When you place an order.

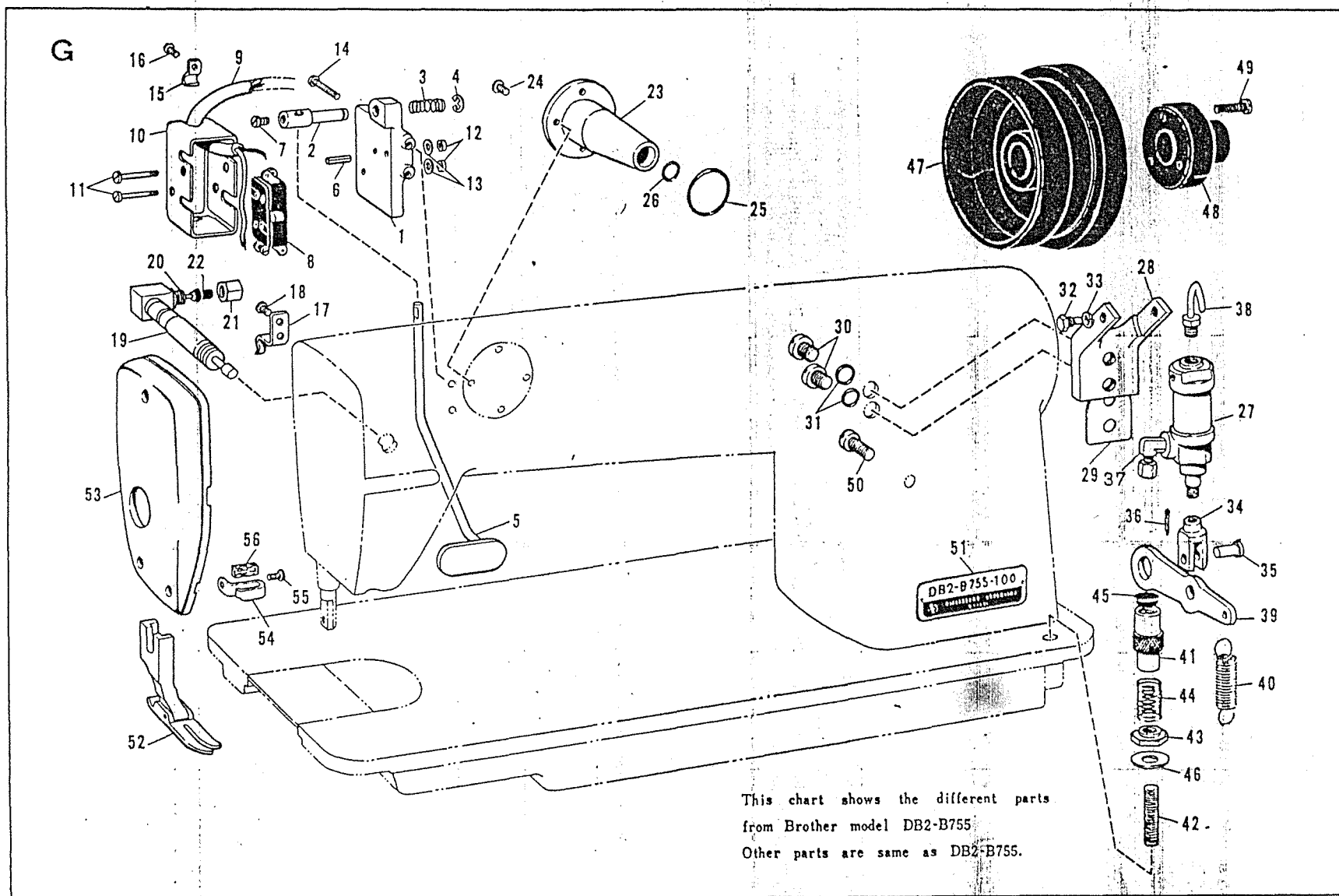
755-100

I 2060086

INDEX

B755-100-1

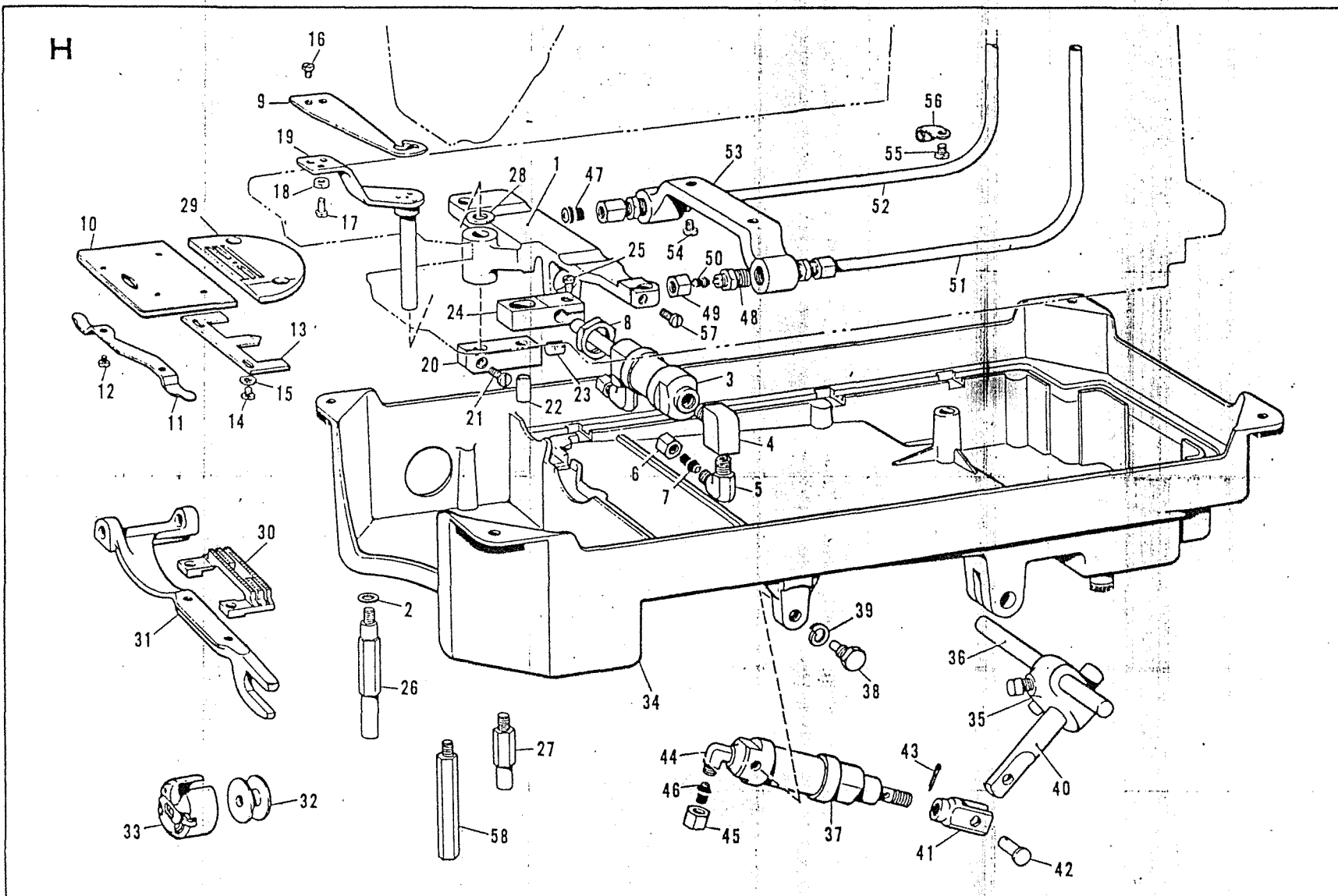
Parts-No.	Ref. No.	Remark	Parts-No.	Ref. No.	Remark	Parts-No.	Ref. No.	Remark	Parts-No.	Ref. No.	Remark
002301-4-63	I-57		116629-0-01	H-2		140632-0-01	H-53		140803-0-01	G-54	
002501-0-64	I-19		116782-0-01	H-32		140633-0-01	I-1		140804-0-01	G-56	
"	I-34		140518-0-01	G-30		140634-0-01	H-52		140805-0-01	G-53	
004301-0-64	I-50		140537-0-01	I-12		140635-0-01	H-47		140837-0-01	H-17	
004401-0-14	I-7		140538-0-00	I-29		140636-0-01	G-1		140914-0-01	I-45	
007670-5-13	H-16		140539-0-00	I-31		140637-0-01	G-2		140915-0-01	I-49	
007671-2-12	G-14		140540-0-00	I-22		140638-0-01	G-3		140922-0-01	I-55	
008400-5-64	I-5		140542-0-01	I-30		140639-0-01	G-5		140923-0-00	I-11	
009670-6-12	G-16		140543-0-00	G-20		140642-0-00	G-8,9		140924-0-00	I-41	
009680-8-13	H-21		"	H-48		140643-0-00	G-8		140925-0-00	I-42	
"	H-25		"	I-37		140644-0-00	G-10		140926-0-00	I-43	
009681-4-13	H-57		140544-0-00	I-40		140645-0-00	G-9		140957-0-01	G-52	
009710-8-13	H-54		140545-0-01	I-53		140646-0-01	G-11		142037-0-00	I-32	
009712-0-02	G-49		140548-0-01	I-54		140647-0-01	G-15		142038-0-01	I-33	
009761-4-13	G-50		140557-0-01	G-7		140648-0-01	G-41		142051-0-01	H-1	
021300-1-63	I-52		140574-0-01	G-51		140649-0-01	G-42		142055-0-01	H-3	
"	I-59		140575-0-01	H-29		140650-0-01	G-43		142058-0-01	H-9	
021400-1-64	I-9		140576-0-01	G-47		140651-0-01	G-44		142059-0-01	H-10 ~ 12	
021500-1-63	I-21		140577-0-01	G-39		140652-0-01	G-17		142060-0-01	H-10	
021670-2-03	H-18		140578-0-01	G-40		140653-0-01	G-19		142061-0-01	H-13	
025050-1-34	I-35		140579-0-01	H-31		140663-0-01	H-51		142062-0-01	G-27	
025080-1-32	G-46		140580-0-01	H-30		140664-0-01	G-23		142065-0-01	H-37	
025100-1-63	I-36		140581-0-01	H-33		140667-0-01	H-38		142067-0-01	I-56	
025630-2-32	G-13		140582-0-00	H-34		140670-0-01	I-2		142123-0-01	G-22	
028030-2-43	I-51		140583-0-01	H-35		140671-0-01	I-3		"	H-7	
"	I-58		140585-0-01	H-26		140672-0-01	I-4		"	H-46	
028040-2-43	I-8		140587-0-01	H-27		140673-0-01	I-6		"	H-50	
028050-1-43	I-20		140594-0-00	H-4		140674-0-01	I-10		"	I-39	
028060-1-40	G-33		140599-0-00	G-37		140675-0-01	I-13		142206-0-01	H-28	
"	H-39		"	H-5		140678-0-00	I-14		142263-0-01	I-17	
045101-2-00	G-36		"	H-44		140679-0-01	I-23		142264-0-00	I-16	
"	H-43		140600-0-00	H-8		140680-0-00	I-24		142265-0-00	G-21	
047302-2-42	G-6		140603-0-01	H-20		140681-0-00	I-25		"	H-6	
048040-3-42	G-4		140604-0-01	H-22		140682-0-01	I-27		"	H-45	
081003-6-70	G-26		140605-0-01	H-24		140683-0-00	I-28		"	H-49	
081007-0-70	G-31		140608-0-01	H-11		140686-0-01	I-44 ~ 46		"	I-38	
100064-0-05	G-18		140616-0-01	G-48		140687-0-01	I-44		142310-0-01	H-19	
100242-0-04	H-55		140618-0-01	G-28		140688-0-01	H-40		142348-0-01	I-18	
101706-0-01	H-23		140619-0-01	G-29		"	I-48		142349-0-00	I-15	
102538-0-02	G-24		140620-0-01	G-32		140689-0-01	I-46		145088-0-01	H-58	
104450-0-01	G-45		140627-0-01	G-34		140690-0-01	I-47,48		400163-0-01	H-14	
104548-0-01	G-25		"	H-41		140691-0-01	I-47		403069-0-01	H-15	
107168-0-01	H-12		140628-0-01	G-35		140694-0-01	I-60		500296-0-02	G-12	
108960-0-01	G-55		"	H-42		140703-0-01	I-26				
109193-0-01	H-56		140629-0-00	G-38		140802-0-01	H-36				



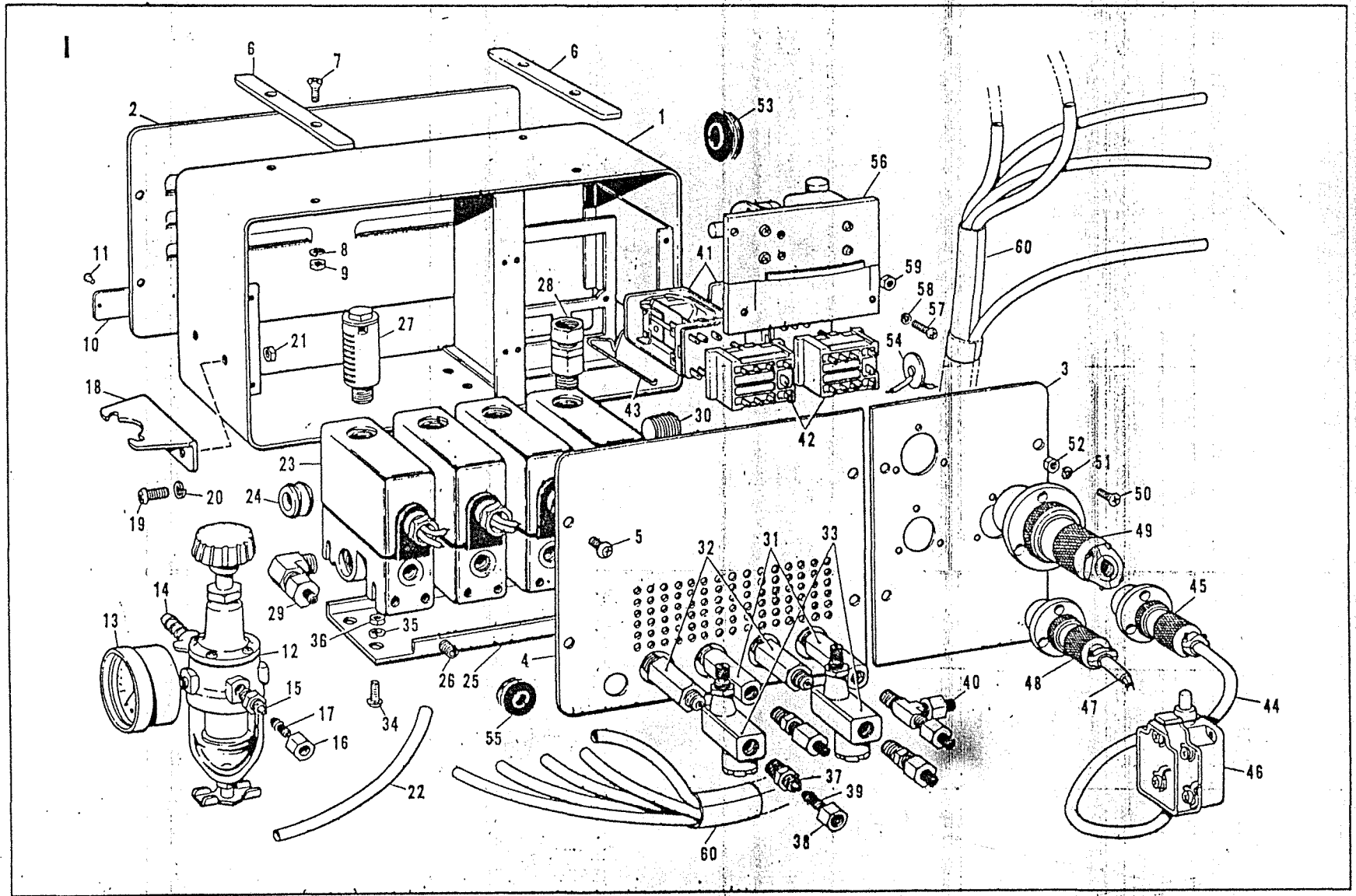
PART LIST for DB2-B755-100

B755-100-G 2

Ref. No.	Name of Parts	Qty	Parts No.	Assembly No.	Ref. No.	Name of Parts	Qty	Parts No.	Assembly No.
This part-list shows the different parts from Brother model DB2-B755. Other parts are same as DB2-B755.					G-43	Adjusting Nut	1 pce.	140650-0-01	
					G-44	Stopper Spring	1 "	140651-0-01	
G-1	Micro-switch Bracket	1 pce.	140636-0-01		G-45	Cushion for G-41	1 "	104450-0-01	
G-2	Pin for Reverse Finger	1 "	140637-0-01		G-46	Washer M8	1 "	025080-1-32	
G-3	Spring for Reverse Finger	1 "	140638-0-01		G-47	Pulley	1 "	140576-0-01	
G-4	Stop Ring	1 "	048040-3-42		G-48	Slip Ring Support	1 "	140616-0-01	
G-5	Reverse Finger	1 "	140639-0-01		G-49	Set Screw SM4.76-32 X 20	3 pcs.	009712-0-02	
G-6	Spring Pin AW3 X 22	1 "	047302-2-42		G-50	Set Screw SM5.95-28 X 14	1 pce.	009761-4-13	
G-7	Set Screw SW4.37-40 X 7	1 "	140557-0-01		G-51	Model Plate	1 "	140574-0-01	
G-8	Micro-switch	1 "	140643-0-00	140642-0-00	G-52	Presser Foot	1 "	140957-0-01	
G-9	Actuator Cord	1 "	140643-0-00		G-53	Face Plate	1 "	140805-0-01	
G-10	Micro-switch Cover	1 "	140644-0-00		G-54	Face Plate Thread Guide	1 "	140803-0-01	
G-11	Set Screw for G-10	2 pcs.	140646-0-01		G-55	Set Screw for G-54	1 "	108960-0-01	
G-12	Nut for G-11	2 "	500296-0-02		G-56	Felt for G-54	1 "	140804-0-01	
G-13	Washer SM2.38 for G-12	2 "	025630-2-32						
G-14	Set Screw SM3.57-40 X 12	2 "	007671-2-12						
G-15	Cord Holder	2 "	140647-0-01						
G-16	Set Screw SM3.57-40 X 6	2 "	009670-6-12						
G-17	Holder for Thread Tension Releasing Air Cylinder	1 pce.	140652-0-01						
G-18	Set Screw for G-17	2 pcs.	100064-0-05						
G-19	Thread Tension Releasing Air Cylinder	1 pce.	140653-0-01						
G-20	1/8" Connector Assembly	1 "	140543-0-00						
G-21	3/16" Nut	1 "	142265-0-00						
G-22	3/16" Connector Tip	1 "	142123-0-01						
G-23	Supporter for Tension Releasing Air Tube	1 "	140664-0-01						
G-24	Set Screw for G-23	4 pcs.	102538-0-02						
G-25	Packing AN6227-14	1 pce.	104548-0-01						
G-26	Packing PW3	1 "	081003-6-70						
G-27	Reverse Feed Air Cylinder	1 "	142062-0-01						
G-28	Reverse Feed Air Cylinder Holder	1 "	140618-0-01						
G-29	Cylinder Holder Base Plate	1 "	140619-0-01						
G-30	Set Screw for G-28	2 pcs.	140518-0-01						
G-31	Packing P7	2 "	081007-0-70						
G-32	Set Screw for G-28	2 "	140620-0-01						
G-33	Spring Washer for G-32	2 "	028060-1-40						
G-34	Piston Rod Joint	1 pce.	140627-0-01						
G-35	Pin for G-34	1 "	140628-0-01						
G-36	Cotter Pin	1 "	045101-2-00						
G-37	Cylinder Elbow P7 1/8"	1 "	140599-0-00						
G-38	Oil Outlet for G-27	1 "	140629-0-00						
G-39	Supplemental Reverse Lever	1 "	140577-0-01						
G-40	Spring for G-39	1 "	140578-0-01						
G-41	Reverse Lever Stopper	1 "	140648-0-01						
G-42	Set Screw for G-41	1 "	140649-0-01						



Ref. No.	Name of Parts	Q'ty	Parts-No.	Assembly No.	Ref. No.	Name of Parts	Q'ty	Parts-No.	Assembly No.
H-1	Air Cylinder Base Plate	1 pce.	142051-0-01		H-46	3/16" Connector Tip	1 "	142123-0-01	
H-2	Washer for H-26	1 "	116629-0-01		H-47	Cap for Air Tube	1 "	140635-0-01	
H-3	Thread Trimming Air Cylinder	1 "	142055-0-01		H-48	1/8" Connector Assembly	2 pcs.	140543-0-00	
H-4	1/8" Elbow	1 "	140594-0-00		H-49	3/16" Nut	2 "	142265-0-00	
H-5	PT 1/8" Elbow Assembly	2 pcs.	140599-0-00		H-50	3/16" Connector Tip	2 "	142123-0-01	
H-6	3/16" Nut	2 "	142265-0-00		H-51	Air Tube for H-19	1 pce.	140663-0-01	
H-7	3/16" Connector Tip	2 "	142123-0-01		H-52	Air Tube for H-27	1 "	140634-0-01	
H-8	Nut for H-3	1 pce.	140600-0-00		H-53	Tube Holder Bracket	1 "	140632-0-01	
H-9	Movable Knife	1 "	142058-0-01		H-54	Set Screw SM4.76-32 X 8	2 pcs.	009710-8-13	
H-10	Slide Plate	1 "	142060-0-01		H-55	Set Screw for H-56	1 pce.	100242-0-04	
H-11	Slide Plate Spring	1 "	140608-0-01	142059-0-01	H-56	Tube Holder	1 "	109193-0-01	
H-12	Set Screw for H-11	2 pcs.	107168-0-01	142059-0-01	H-57	Set Screw for H-1	1 "	009681-4-13	
H-13	Fixed Knife	1 pce.	142061-0-01		H-58	Stud Bolt	1 "	145088-0-01	
H-14	Set Screw for H-13	2 pcs.	400163-0-01						
H-15	Washer for H-14	2 "	403069-0-01						
H-16	Set Screw 3.57-40 X 5	2 "	007670-5-13						
H-17	Adjusting Screw for H-9	1 pce.	140837-0-01						
H-18	Nut SM3.57-40 for H-17	1 "	021670-2-03						
H-19	Knife Actuating Lever	1 "	142310-0-01						
H-20	Knife Actuating Link	1 "	140603-0-01						
H-21	Set Screw SM4.37-40 X 8	1 "	009680-8-13						
H-22	Connecting Pin	1 "	140604-0-01						
H-23	Set Screw for H-22	1 "	101706-0-01						
H-24	Piston Link	1 "	140605-0-01						
H-25	Set Screw SM4.37-40 X 8	1 "	009680-8-13						
H-26	Supporting Bolt A	1 "	140585-0-01						
H-27	Supporting Bolt B	1 "	140587-0-01						
H-28	Thrust Washer	1 "	142206-0-01						
H-29	Needle Plate	1 "	140575-0-01						
H-30	Feed Dog	1 "	140580-0-01						
H-31	Feed Arm	1 "	140579-0-01						
H-32	Bobbin	1 "	116782-0-01						
H-33	Bobbin Case	1 "	140581-0-01						
H-34	Oil Pan	1 "	140582-0-00	146291001					
H-35	Joint for G-36, 40	1 "	140583-0-01						
H-36	Presser Foot Lifting Shaft	1 "	140802-0-01						
H-37	Presser Foot Lifting Air Cylinder	1 "	142065-0-01						
H-38	Supporting Screw for H-37	2 pcs.	140667-0-01						
H-39	Spring Washer for H-38	2 "	028060-1-40						
H-40	Piston Actuating Link	1 pce.	140688-0-01						
H-41	Piston Rod Joint	1 "	140627-0-01						
H-42	Pin for H-41	1 "	140628-0-01						
H-43	Cotter Pin for H-42	1 "	045101-2-00						
H-44	PT 1/8" Elbow Assembly	1 "	140599-0-00						
H-45	3/16" Nut	1 "	142265-0-00						



143959001 13-2-71

B755-100-1 6

Ref. No.	Name of Parts	Q'ty	Parts-No.	Assembly No.	Ref. No.	Name of Parts	Q'ty	Parts-No.	Assembly No.
1-1	Air Control Box	1 pce.	140633-0-01		1-46	Limit Switch	1 pce.	140689-0-01	140686-0-01
1-2	Front Cover	1 "	140670-0-01		1-47	Cord for Reverse Feed Signal	1 "	140691-0-01	140690-0-01
1-3	Rear Cover Right	1 "	140671-0-01		1-48	Metal Connector for 1-47	1 "	140688-0-01	
1-4	Rear Cover Left	1 "	140672-0-01		1-49	Metal Connector for Motor	1 "	140915-0-01	
1-5	Set Screw M4 X 5	12 pcs.	008400-5-64		1-50	Set Screw M3 X 10	9 pcs.	004301-0-64	
1-6	Air Control Box Fixing Plate	2 "	140673-0-01		1-51	Spring Washer M3	9 "	028030-2-43	
1-7	Set Screw M4 X 10	4 "	004401-0-14		1-52	Hexagonal Nut	9 "	021300-1-63	
1-8	Spring Washer M4	4 "	028040-2-43		1-53	Cord Bushing	1 pce.	140545-0-01	
1-9	Hexagonal Nut M4	4 "	021400-1-64		1-54	Variable Resistor	5 pcs.	140548-0-01	
1-10	Model Plate	1 pce.	140674-0-01		1-55	Rubber Bushing	1 pce.	140922-0-01	
1-11	Set Pin for 1-10	2 pcs.	140923-0-00		1-56	Time Delay Unit	1 "	142067-0-01	
1-12	Air Filter Assembly	1 pce.	140537-0-01		1-57	Set Screw M3 X 14	2 pcs.	002301-4-63	
1-13	Pressure Gauge	1 "	140675-0-01		1-58	Spring Washer M3	2 "	028030-2-43	
1-14	Air Tube Connector	1 "	140678-0-00		1-59	Hexagonal Nut M3	2 "	021300-1-63	
1-15	1/4" Connector Assembly	1 "	142349-0-00		1-60	Bundled Air Tubes	1 pce.	140694-0-01	
1-16	1/4" Nut	1 "	142264-0-00						
1-17	1/4" Connector Tip	1 "	142263-0-01						
1-18	Filter Bracket	1 "	142348-0-01						
1-19	Set Screw M5 X 10	2 pcs.	002501-0-64						
1-20	Spring Washer M5	2 "	028050-1-43						
1-21	Nut for 1-18	2 "	021500-1-63						
1-22	Air Tube	1 pce.	140540-0-00						
1-23	Solenoid Valve	4 pcs.	140679-0-01						
1-24	Bushing with O-ring	3 "	140680-0-00						
1-25	Mounting Rail for Solenoid Valve	1 pce.	140681-0-00						
1-26	Set Screw for 1-23	16 pcs.	140703-0-01						
1-27	Silencer	4 "	140682-0-01						
1-28	Speed Control Nut Assembly	1 pce.	140683-0-00						
1-29	1/4" Elbow	1 "	140538-0-00						
1-30	Set Screw	1 "	140542-0-01						
1-31	Valve Connector	2 pcs.	140539-0-00						
1-32	Speed Controller Connector	2 "	142037-0-00						
1-33	Speed Controller	2 "	142038-0-01						
1-34	Set Screw M5 X 10	4 "	002501-0-64						
1-35	Washer M5	4 "	025050-1-34						
1-36	Hexagonal Nut M5	4 "	025100-1-63						
1-37	1/8" Connector Assembly	3 "	140543-0-00						
1-38	3/16" Nut	3 "	142265-0-00						
1-39	3/16" Connector Tip	3 "	142123-0-01						
1-40	1/8" T-connector	1 pce.	140544-0-00						
1-41	Relay	2 pcs.	140924-0-00						
1-42	Relay Socket	2 "	140925-0-00						
1-43	Relay Stopper	2 "	140926-0-00						
1-44	Cord for Presser Foot Lifting Signal	1 pce.	140687-0-01						
1-45	Metal Connector for 1-44	1 "	140914-0-01	140686-0-01					